

DNP	BG	USA	ISO	CH2	CH3	øE	L1	L2	L3	F	COD. (F)	COD. (M)
04	0	02	5	17	14	23	62	50	31	G 1/8	PBVM.0404.002	PBVM.0404.003
										1/8 NPT	PBVM.0404.012	PBVM.0404.013
06	1	04	6.3	19	19	28	76	60	38	G 1/4	PBVM.0606.002	PBVM.0606.003
										1/4 NPT	PBVM.0606.012	PBVM.0606.013
10	2	06	10	24	22	35	86	67.5	43	G 3/8	PBVM.1010.002	PBVM.1010.003
										3/8 NPT	PBVM.1010.012	PBVM.1010.013
13	3	08	12.5	30	27	44	97	76	48.5	G 1/2	PBVM.1313.002	PBVM.1313.003
										1/2 NPT	PBVM.1313.012	PBVM.1313.013
20	4	12	20	36	34	52	114	91.5	57	G 3/4	PBVM.2019.002	PBVM.2019.003
										3/4 NPT	PBVM.2019.012	PBVM.2019.013
25	5	16	25	41	41	60	131	106	65.5	G 1	PBVM.2525.002	PBVM.2525.003
										1 NPT	PBVM.2525.012	PBVM.2525.013
39	7	24	40	65	65	75	200	125	125	G 1 1/4	PBVM.3931.002	PBVM.3931.003
										1 1/4 NPT	PBVM.3931.012	PBVM.3931.013
										G 1 1/2	PBVM.3939.002	PBVM.3939.003
										1 1/2 NPT	PBVM.3939.012	PBVM.3939.013
50	8	32	50	90	90	105	220	142	142	G 2	PBVM.5051.002	PBVM.5051.003
										2 NPT	PBVM.5051.012	PBVM.5051.013

CARATTERISTICHE TECNICHE

Materiali: parti principali in ottone. Molle in AISI 302 e sfere in AISI 316. **Guarnizioni:** standard in FPM (Viton™). Altre qualità a richiesta. **Temperatura di esercizio:** con guarnizioni standard - 25°C + 200°C. **Antiextrusore:** in Teflon puro.

TECHNICAL INFORMATION

Material: Main parts in brass. Springs in AISI 302 and balls in AISI 316. **Joints:** standards are in FPM (Viton™). Other joints provided on request. **Working temperatures:** with standard seals - 25°C + 200°C. **Back-up ring:** in pure Teflon.

TECHNISCHE MERKMALE

Werkstoff: Hauptteile aus Messing. Federn aus AISI 302 und Kugeln aus AISI 316. **Dichtungen:** standardmaessig in FPM (Viton™). Andere Dichtungen auf Anfrage ebenfalls lieferbar. **Betriebstemperatur:** mit Standard-Dichtung - 25°C + 200°C. **Stuetzring:** aus rein Teflon.

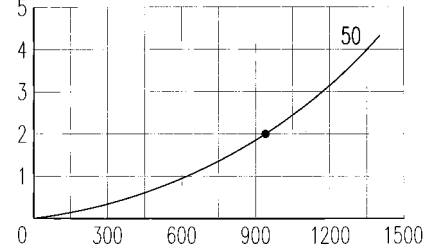
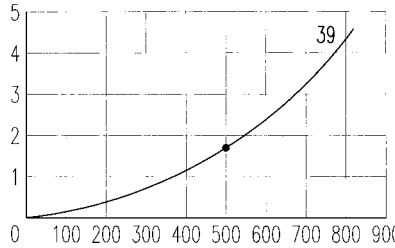
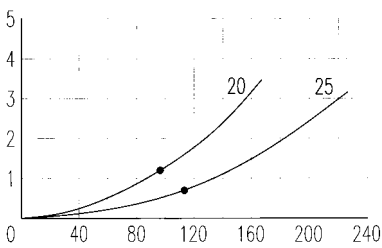
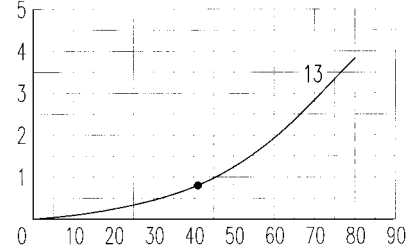
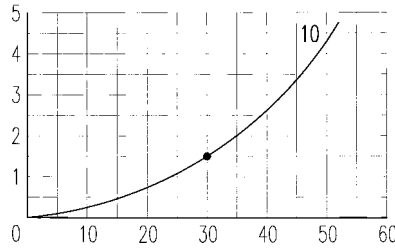
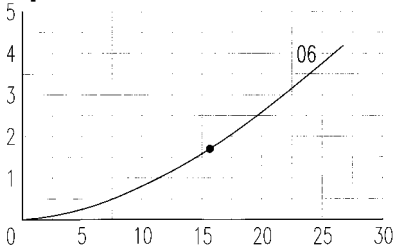
CARACTERISTIQUES TECHNIQUES

Matériel: composants principaux en laiton. Ressorts en AISI 302 et billes en AISI 316. **Joints:** FPM (Viton™) en standard. Autres joints sur demande. **Température de service:** avec joints standard - 25°C + 200°C. **Bague anti-extrusion:** en Teflon pur.

Dimensione nominale Nominal size Nennmass Dimension nominale				Press. max d'esercizio Max working pressure Max Betriebsdruck Press. de service max	Portata nominale Rated flow Durchfluss Débit	Pressione min di scoppio / Min burst pressure Min Berstdruck / Pression d'éclatement min			Spillaggio / Fluid spillage Ölverlust / Ecoulement	
DNP	BG	USA	ISO			Maschio / Male Stecker / Måle	Femmina / Female Muffe / Femelle	Innestato / Coupled Gekuppelt / Accouplé		(bar)
				DN (mm)	(bar)	(l/m)	(bar)	(bar)	(bar)	(cc)
04	0	02	5	4	250	6	1200	2000	1600	0,5
06	1	04	6.3	6.5	200	16	820	1000	940	1
10	2	06	10	9	200	30	800	1160	980	2.4
13	3	08	12.5	10.5	200	41	820	910	960	3.9
20	4	12	20	15.6	150	92	600	715	860	11
25	5	16	25	17.3	180	113	765	725	725	19
39	7	24	40	36	100	500	400	450	450	95
50	8	32	50	50	80	940	310	350	350	170

PERDITA DI CARICO / PRESSURE DROP / DRUCKVERLUST / DEBIT DE PRESSION (Δp bar - l/m)

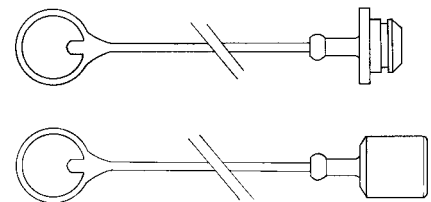
Δp (bar)



l/m

ACCESSORI / ACCESSORIES / ZUBEHÖR / ACCESSOIRES

DNP size	Tappo per femmina Female dust plug Staubstecker Bouchon pour fem.	Cappuccio per masc. Male dust cap Staubkappe Capuchon pour mâle	Colore Colour Farbe Couleur	Materiale Material Werkstoff Matériel
06	SPBV.06002	SPBV.06003	BLUE	PVC
10	SPBV.10002	SPBV.10003	BLUE	PVC
13	SPBV.13002	SPBV.13003	BLUE	PVC
20	SPBV.20002	SPBV.20003	BLUE	PVC
25	SPBV.25002	SPBV.25003	BLUE	PVC



GUARNIZIONI DI RICAMBIO / SPARE PARTS / ERSATZDICHTUNGEN / JOINTS

DNP size	O-RING FEMMINA / FEMALE O-RING MUFFE O-RING / O-RING FEMELLE	DNP size	ANTIESTRUSORE FEMMINA / FEMALE BACK-UP RING MUFFE STÜTZRING / CONTRE-JOINT FEMELLE	
04	PBV.004.120 V VITON	PBV.004.120 E EPDM	PBV.004.120 N NEOPRENE	
06	PBV.006.120 V	PBV.006.120 E	PBV.006.120 N	
10	PBV.010.120 V	PBV.010.120 E	PBV.010.120 N	
13	PBV.013.120 V	PBV.013.120 E	PBV.013.120 N	
20	PBV.019.120 V	PBV.019.120 E	PBV.019.120 N	
25	PBV.025.120 V	PBV.025.120 E	PBV.025.120 N	
39	PBV.039.120 V	PBV.039.120 E	PBV.039.120 N	
50	PBV.050.120 V	PBV.050.120 E	PBV.050.120 N	
			04	PBV.004.130 PTFE
			06	PBV.006.130
			10	PBV.010.130
			13	PBV.013.130
			20	PBV.019.130
			25	PBV.025.130