



# Product Summary

## 产品概览

- └ ○ Filtration 过滤
- └ ○ Fluid Management 液体管理
- └ ○ CMP Division 颗粒检测产品部分

# EVERYTHING UNDER CONTROL

## 一切尽在掌握中

Quality is the basic characteristic of all our products.  
优质是我们所有产品的基本特征。

The series of analyses, checks and inspections that MP Filtri subjects all its products to is a telling example of the way quality has always been a crucial part of the company ethos.

MP FILTRI公司对其所有产品进行的一系列分析、核对及检查即有力例证了质量是如何始终作为公司精神重要组成部分的。

The great attention paid to quality-related problems has led to MP Filtri obtaining the ISO 9001 Quality System certification and, more recently, the Vision 2000 certification, which governs all the company functions.

因为对质量相关问题极其重视，MP FILTRI通过了ISO9001质量体系认证，而且最近还通过了Vision2000认证，其管控着公司各个部门的职能。

This incessant control activity, from the first stages of production right through to the packing and shipment of the end product, is the best possible guarantee of quality for MP Filtri customers.

从生产的首个环节直至成品的包装及运送—这些不断的控制行动，为MP FILTRI客户提供最好质量保证。

## LOOKING AHEAD

### 展望未来

The success achieved paints a picture of a company that is not only strong but also flexible, and the ability to be flexible is an increasingly important factor on the market.

MP FILTRI取得的成功说明，MP FILTRI公司不仅强大而且灵活，而灵活能力是市场上的一项日益重要的因素。

The consolidation of the branches in the USA, Canada, UK, France, Germany and China, together with the opening of sales offices in India and Russia, are proof of MP Filtri resolve to set up an ever more comprehensive network of presences, both in geographical and sectorial terms, with a constant eye to new zones and markets in which to emerge. 美国、加拿大、英国、法国、德国和中国分公司的巩固以及销售办事处在印度和俄罗斯的开办证明了：MP FILTRI决心建立一个不仅在地理方面更加全面而且在行业方面也更加广泛的网络，而且对于公司即将出现于之新的地区和新市场一直很重视。

MP Filtri guiding principles are never to stop, to aim constantly for innovative, high-quality products, to respect the customer by being ready at all times to respond to his or her demands in terms of both product design and after-sales service and, above all, to base its activities on a team of capable, motivated people with a strong belief in their work and their company.

MP FILTRI公司的指导原则是：永不停止，不断致力高质量创新产品，尊重客户，随时准备响应客户在产品设计及售后服务方面的需求，尤其是，将公司的活动建立在有能力、积极、对自己的工作及公司坚信不移的团队基础上。

For more than forty years, MP Filtri has been present on the hydraulic filtration market with a range of products able to satisfy manufacturers' needs in all areas. 四十多年来，MP FILTRI已在液压过滤市场呈现了一系列产品能够满足生产商所有领域的需求！。

# RESEARCH AS A PRIORITY

## 研究至上

MP Filtri designs, develops and constructs all its products, controlling the whole of the production process in its own foundry, its plastic injection press department, its machining workshop, its filter element production lines and its product assembly lines.

MP FILTRI公司设计、开发及构建其所有产品，并控制其制造厂、注塑机部门、加工车间、滤芯生产线及其产品装配线的全部生产过程。

The MP Filtri range of components are all used in the design and development of industrial hydraulic systems in mobile and construction equipment.

MP FILTRI系列零部件全部用于设计及开发的工业液压系统的移动和施工设备中。

MP Filtri has always paid particular attention to research and development, because it is only by keeping product quality high that customer loyalty can be won and maintained.

MP FILTRI公司对研究及开发一直特别重视，因为只有保持产品的高质量才能赢得并保持客户的忠诚。

The MP Filtri laboratory has the most modern apparatus and instruments, manned by technicians with a wealth of specific experience.

MP FILTRI公司实验室拥有最现代化的仪器及器械，并配备具有经验丰富的技术员。



In the field of filtration, contamination monitoring, accessories and structural components, MP Filtri knows the answers and provide the skills required for industry which is rapidly evolving in the following sectors:

在过滤、污染物监测、配件及构件领域，MP FILTRI知道答案，为以下区域快速发展的产业提供所需技能：

- Steel 钢铁
- Machine tools 机床
- Naval Engineering 船用工程
- Presses 印刷机
- Engineering Off Shore 近海工程
- Construction equipment 施工设备
- Agricultural machinery 农业机械
- Energy 能源
- Test Benches 试验台
- Aeronautical engineering 航空工程

# SUCTION FILTERS

## 吸油过滤器



### STR



Submerged suction filter, flow rates up to 900 l/min (238 gpm), threaded connections from 1/2" to 3" BSP/NPT.

浸没式吸油过滤器，流量达900 l/min (238 gpm)，螺纹连接1/2" ~3" BSP (英国标准管螺纹) /NPT (美国标准锥管螺纹)

### SF2 250



Semi-submerged positive head suction filter, flow rates up to 160 l/min (43 gpm), threaded connections up to 1 1/2" BSP/NPT/SAE and SAE 3000 PSI flanged connections.

半浸没式正压头吸油过滤器，流量达160 l/min (43 gpm)，1 1/2" BSP/NPT/SAE 螺纹连接和SAE 3000 PSI法兰连接。

# SF2 500



Semi-submerged positive head suction filter, flow rates up to 850 l/min (225 gpm), flanged connections up to 4" SAE 3000 PSI.

半浸没式正压头吸油过滤器，流量达 850 l/min (225 gpm)，法兰连接达4" SAE3000 PSI。

# FAS



External suction filter, flow rates up to 550 l/min (145 gpm), threaded connections up to 1/2" to 2 1/2" BSP/NPT and flanged connections up to 3 1/2" SAE 3000 PSI.

外置吸油过滤器，流量达550 l/min (145 gpm)，螺纹连接达1/2" ~2 1/2" BSP/NPT，法兰连接达 3 1/2" SAE 3000 PSI。



# RETURN FILTERS

## 回油过滤器



### MPF



Tank mounted return filter, with oil flow external to internal filtering element.

Working pressure 8 bar (116 psi), flow rates up to 750 l/min (198 gpm), threaded connections from 1/2" to 2" BSP/NPT/SAE and flanged connections up to 2" SAE 3000 PSI.

油箱安装回油过滤器，油流由外向内的过滤滤芯。  
工作压力8bar（116psi），流量达750 l/min（198 gpm），  
螺纹连接1/2" ~2" BSP/NPT/SAE，法兰连接达  
2" SAE 3000 PSI。

### MPT



Tank mounted return filter with oil flow external to internal filtering element.

Working pressure 8 bar (116 psi), flow rates up to 200 l/min (53 gpm), threaded connections from 3/8" to 1 1/4" BSP/NPT/SAE.

油箱安装回油过滤器，油流由外向内的过滤滤芯。  
工作压力8 bar（116 psi），流量达200 l/min（53 gpm），  
螺纹连接3/8" ~1 1/4" BSP/NPT/SAE。

# MPH - MPI



Tank mounted return filter with oil flow internal to external filtering element.

Working pressure 10 bar (145 psi), flow rates up to 2000 l/min (530 gpm), threaded connections from 1/2" to 1 1/2" BSP/NPT/SAE and flanged connections SAE 3000 PSI/DIN up to 4".

油箱安装回油过滤器，油流由内向外的过滤滤芯。  
工作压力10 bar (145 psi)，流量达  
2000 l/min (530 gpm)，螺纹连接1/2" ~1 1/2"  
BSP/NPT/SAE，法兰连接SAE 3000 PSI/DIN达4"。

# FRI



In line or tank mounted return filter with oil flow external to internal filtering element.

Working pressure 20 bar (290 psi), flow rates up to 1500 l/min (397 gpm), threaded connections from 1/2" to 2 1/2" BSP/NPT/SAE and flanged connections up to 3 1/2" SAE 3000 PSI.

管路或油箱安装回油过滤器，油流由外向内的过滤滤芯。  
工作压力20 bar (290 psi)，流量达1500 l/min  
(397 gpm)，螺纹连接1/2" ~ 2 1/2" BSP/NPT/SAE，  
法兰连接达3 1/2" SAE 3000 PSI。



# IN-LINE FILTERS 在线过滤器



## LMP 110 - 120 - 123 Multiport LMP 110 - 120 - 123 多端口



In-line filter, working pressure  
80 bar (1160 psi), flow rates up to 200 l/min (53 gpm),  
threaded connections 3/4" and 1" BSP/NPT/SAE.

在线过滤器，工作压力80 bar（1160 psi），流量达  
200 l/min（53 gpm），螺纹连接3/4" 和1" BSP/NPT/SAE。

## LMP 210



In-line filter, working pressure  
60 bar (870 psi), flow rates up to 300 l/min (80 gpm),  
threaded connections from 1" to 1 1/2" BSP/NPT/SAE  
and flanged connections up to 1 1/2" SAE 3000 PSI.

在线过滤器，工作压力60 bar（870 psi），流量达  
300 l/min（80 gpm），螺纹连接1" ~1 1/2" BSP/NPT/SAE，  
法兰连接达1 1/2" SAE 3000 PSI。

# LMP 400 - 430



In-line filter, working pressure  
50/60 bar (725/870 psi), flow rates up to  
740 l/min (195 gpm), threaded connections from  
1 1/2" and 2" BSP/NPT/SAE and flanged connections  
2" and 2 1/2" SAE 3000 PSI.

在线过滤器，工作压力50/60 bar（725/870 psi），流量达  
740 l/min（195 gpm），螺纹连接1 1/2" ~ 2" BSP/NPT/  
SAE，法兰连接2" ~ 2 1/2" SAE 3000 PSI。

# LMP 900



In-line filter, working pressure  
30 bar (435 psi), flow rates up to 2000 l/min (528 gpm),  
flanged connections 3" and 4" SAE 3000 PSI.

在线过滤器，工作压力30 bar（435 psi），流量达  
2000 l/min（528 gpm），法兰连接3" 和4" SAE 3000 PSI。

# LMP 950



In-line simplex or modular filter, from 2 to 6 heads  
working pressure 30/25 bar (435/362 psi),  
flow rates up to 2400 l/min (634 gpm),  
flanged connections 3" and 4" SAE 3000 PSI.

单联式或多联式在线过滤器，2~6头工作压力30/25  
bar（435/362 psi），流量达2400 l/min（634 gpm），  
法兰连接3" 和4" SAE 3000 PSI。

# LMD



In-line duplex filter, working pressure  
16 bar (232 psi), flow rates up to 1200 l/min (315 gpm),  
flanged connections 2 1/2", 3" and 4"  
SAE 3000 PSI DIN PN 16.

双联式在线过滤器，工作压力16 bar（232 psi），流量达  
1200 l/min（315 gpm），法兰连接2 1/2"，3" 和4"。

# PRESSURE FILTERS 压力过滤器



## FMP 039



In-line filter, working pressure 110 bar (1595 psi), flow rates up to 90 l/min (24 gpm), threaded connections 1/2" BSP/NPT/SAE.

压力过滤器，工作压力110bar（1595psi），流量达90 l/min（24 gpm），螺纹连接1/2" BSP/NPT/SAE。

## FHP 010



In-line filter, working pressure 420 bar (6000 psi), flow rates up to 40 l/min (11 gpm), threaded connections up to 3/8" BSP/NPT/SAE.

压力过滤器，工作压力420 bar（6000 psi），流量达40 l/min（11 gpm），螺纹连接达3/8" BSP/NPT/SAE。

## FMM



In-line filter, working pressure  
420 bar (6091 psi), flow rates up to 150 l/min (40 gpm),  
threaded connections up to 3/4" BSP/NPT/SAE/ISO 6179.

压力过滤器，工作压力420 bar（6091 psi），流量达  
150 l/min（40 gpm），螺纹连接达3/4" BSP/NPT/SAE/  
ISO 6179。

## FMP



In-line filter, working pressure  
280 bar (4061 psi), flow rates up to 475 l/min (126 gpm),  
threaded connections up to 1 1/2" BSP/NPT/SAE and  
flanged connections up to 1 1/2" SAE 3000 PSI.

压力过滤器，工作压力280 bar（4061 psi），流量  
475 l/min（126 gpm），螺纹连接达1 1/2" BSP/NPT/SAE，  
法兰连接达1 1/2" SAE 3000 PSI。

## FHA



In-line filter, working pressure 520 bar (7540 psi),  
flow rates up to 150 l/min (40 gpm), threaded connections  
up to 3/4" BSP/NPT/SAE/ISO 6179.

压力过滤器，工作压力520 bar（7540 psi），流量达  
150 l/min（40 gpm），螺纹连接达 3/4" BSP/NPT/SAE/  
ISO 6179。

## FHP



In-line filter, working pressure 420 bar (6091 psi),  
flow rates up to 475 l/min (126 gpm), threaded  
connections up to 1 1/2" BSP/NPT/SAE and flanged  
connections up to 1 1/4" SAE 6000 PSI.

压力过滤器，工作压力420 bar（6091 psi），流量达  
475 l/min（126 gpm），螺纹连接达 1 1/2" BSP/NPT/SAE，  
法兰连接达1 1/4" SAE 6000 PSI。

## FHP 500



In-line filter, working pressure 420 bar (6091 psi), flow rates up to 750 l/min (199 gpm), threaded connections up to 1 1/2" BSP/NPT/SAE and flanged connections up to 2" SAE 6000 PSI.

压力过滤器，工作压力420 bar（6091 psi），流量达750 l/min（199 gpm），螺纹连接达 1 1/2" BSP/NPT/SAE，法兰连接达 2" SAE 6000 PSI。

## FHM



Manifold mounted filter, working pressure 320 bar (4641 psi), flow rates up to 430 l/min (114 gpm), manifold connections.

叠加式过滤器，工作压力320 bar（4641 psi），流量达430 l/min（114 gpm），阀块连接。

## FHB



Side manifold mounted filter, working pressure 320 bar (4641 psi), flow rates up to 490 l/min (130 gpm), side manifold connections.

侧向板式过滤器，工作压力320bar（4641 psi），流量达490 l/min（130 gpm），侧向阀块连接。

## FHF 320



In-line filter, working pressure 350 bar (5076 psi), flow rates up to 500 l/min (133 gpm), threaded connections 1 1/2" BSP/NPT/SAE and flanged connections 2" SAE 6000 PSI manifold type.

压力过滤器，工作压力350 bar（5076 psi），流量达500 l/min（133 gpm），螺纹连接1 1/2" BSP/NPT/SAE，法兰连接2" SAE 6000 PSI。



In line duplex filter, working pressure 350 bar (5076 psi), flow rates up to 345 l/min (92 gpm), threaded connections from 1/2" to 1 1/4" BSP/NPT/SAE and flanged connections 1 1/2" SAE 6000 PSI.

双联式管路过滤器，工作压力350 bar（5076 psi），流量达345 l/min（92 gpm），螺纹连接1/2"~1 1/4" BSP/NPT/SAE，法兰连接1 1/2" SAE 6000 PSI。



# SPIN-ON FILTERS 旋装式过滤器



## MPS



Either suction or return line in-line mounted Spin-On, working pressure 12 bar (174 psi), flow rates up to 300 l/min (80 gpm), threaded connections from 3/4" and 1 1/2" BSP/NPT/SAE and flanged connections 1 1/2" SAE 3000 PSI.

旋装式吸油管或回油管管路安装过滤器，工作压力 12 bar (174 psi)，流量达300 l/min (80 gpm)，螺纹连接3/4" ~1 1/2" BSP/NPT/SAE，法兰连接1 1/2" SAE 3000 PSI。

## MST



Tank mounted return filter Spin-On, working pressure 12 bar (174 psi), flow rates up to 200 l/min (53 gpm), threaded connections from 3/4" and 1 1/2" BSP/NPT/SAE and flanged connections 1 1/2" SAE 3000 PSI.

旋装式油箱安装回油过滤器，工作压力12 bar (174 psi)，流量达200 l/min (53 gpm)，螺纹连接3/4" ~1 1/2" BSP/NPT/SAE，法兰连接1 1/2" SAE 3000 PSI。



In-line filter Spin-On, working pressure 35 bar (508 psi), flow rates up to 250 l/min (66 gpm), threaded connections from 3/4" to 1 1/2" BSP/NPT/SAE.

旋装式管路过滤器，工作压力35 bar（508 psi），流量达250 l/min（66 gpm），螺纹连接3/4" ~1 1/2" BSP/NPT/SAE。

## CT - CH - CS - CG



Filter element Spin-On, working pressure 12/35 bar (174/508 psi), flow rates up to 250 l/min (66 gpm), threaded connections 3/4" BSP 1" - 12 UNF 1 1/4" BSP 1 1/2" - 16 UN

旋装式滤芯，工作压力12/35 bar（174/508 psi），流量达250 l/min（66 gpm），流量达250 l/min（66 gpm），螺纹连接：

3/4" BSP 1" - 12 UNF  
1 1/4" BSP 1 1/2" - 16 UN



## SUCTION/RETURN FILTERS 吸/回油过滤器

### MRS 115



Tank top filter “Suction/Return”, working pressure 10 bar (145 psi), flow rates up to 120 l/min (32 gpm), threaded connections 1” BSP/NPT/SAE.

油箱顶置过滤器“吸入/回油”，工作压力 10 bar（145 psi），流量达120 l/min（32 gpm），螺纹连接1” BSP/NPT/SAE。

### LMP 124



In-line filter “Suction/Return”, working pressure 80 bar (1160 psi), flow rates up to 160 l/min (42 gpm), threaded connections 1” BSP/NPT.

管路过滤器“吸入/回油”，工作压力80 bar（1160 psi），流量达160 l/min（42 gpm），螺纹连接1” BSP/NPT。

## STAINLESS STEEL FILTERS 不锈钢过滤器

### FZ ... INOX



In-line manifold and duplex stainless steel filters, working pressure from 60 bar (870 psi) to 1000 bar (15000 psi), threaded connections from 1/4” to 3/4” BSP-NPT-SAE-AUTOCLAVE.

管路歧管双联不锈钢过滤器，工作压力 60 bar（870 psi）~1000 bar（15000 psi），螺纹连接 1/4” ~3/4” BSP-NPT-SAE-热压处理。

## DIFFERENTIAL INDICATORS 压差指示器

N - E - V ...



Brass and stainless steel differential available, with visual, electrical, electrical/visual and electronic reading.

Electrical protection IP 65 and IP 67.

Also available with temperature lockout options.

黄铜和不锈钢压差指示器，可视、电、电/目视及电子读数。

电气保护IP 65和IP 67。

也可带温度锁定选项。

## MP REFIT ELEMENT MP可替换滤芯

MP REFIT



Interchangeable filter elements manufactured to conform with international ISO standards:

按照国际ISO标准生产的可互换滤芯：

- 2941
- 2942
- 2943
- 3723
- 3724
- 3968
- 16889



# CONDITION MONITORING & MOBILE FILTRATION UNITS 状态监测与移动过滤装置



## LPA 2



Particle counter calibrated to ISO 11171 standard, working pressure from 2 bar (29 psi) to 400 bar (5801 psi). Contamination reports data in ISO 4406, NAS 1638 and AS4059 formats.

Oil temperature and relative humidity reading sensors.

按照ISO11171标准校准的颗粒计数器，工作压力从2 bar（29 psi）~400 bar（5801 psi）。污染报告数据为ISO 4406、NAS1638和AS4059格式。油温及相对湿度显示传感器。

# CML 2



The CML2 contamination Analyser is designed to measure and quantify the number of solid contaminants in Hydraulic, Lubrication and Transmission applications. The CML2 is a portable, accurate instrument suitable for “on-site” applications utilising mineral oil as the operating fluid.

CML2污染物分析器旨在测量并确定液压、润滑和传输应用中固体污染物的数量。

CML2是便携式的精准仪器，适合于使用矿物油作为工作液体的“现场”应用。

## 110 ml BOTTLE SAMPLER

### 110 ml 瓶取样装置



Accessories to be used together with LPA2 and CML2 counters for the statistical analysis of oils available for 110 ml containers.

与LPA2和CML2计数器一起使用的配件，用于油剂的数据分析，使用于110ml容器。

## 250 ml BOTTLE SAMPLER

### 250 ml 瓶取样装置



Accessories to be used together with LPA2 and CML2 counters for the statistical analysis of oils available for 250 ml containers.

与LPA2和CML2计数器一起使用的配件，用于油剂的数据分析，适用于250ml容器。

# ICM



The ICM automatically measures and displays particulate contamination, moisture and temperature levels in various hydraulic fluids.

It is designed specifically to be mounted directly to systems, where ongoing measurement or analysis is required, and where space and costs are limited.

ICM在各种液压油中自动测量并显示颗粒污染物、水分及温度水平。

它具有专门设计，直接安装在需要进行不间断测量或分析的且空间或成本有限的系统上。

# AZ2



## ATEX Fluid Condition Monitors

- Zone II 3G rated
- Available in ICM or LPA2 models
- PLC Control across various communication protocols
- Supplied Calibrated

## ATEX流体状态监测器

- II区3G
- ICM或LPA2型号中带有
- 各通讯协议间的PLC控制
- 供货时已校准

# VPAF



Mobile unit for the measurement and optical display of contamination in oils on 47 mm membranes.

The unit contains equipment for the static and dynamic sampling of oils in hydraulic systems and tanks.

用于47mm膜上油剂污染物测量和光显示的移动装置。  
这一装置包含用以对液压系统和液压箱中油剂进行静态和动态采样的设备。



## GRF 15



The GRF 015 is a portable oil transfer/filtration unit, specifically designed for both filling/transferring hydraulic oils from containers to the hydraulic tank as well as filtering and cleaning hydraulic systems.

GRF 015是一种便携式输油/滤油装置，专门用于将油剂从容器灌注/输送到液压箱，也可用于过滤和清洁液压系统。

Flow rate 15 l/min. 流量15 l/min。

Pressure max. 5 bar. 最大压力5bar。

Electrical motor: single phase. 电动机: 单相。

## UFM 040



UMF 040 mobile filtration units suitable for filling and refilling of filtered hydraulic fluids and lubrication tanks.

UMF 040移动过滤装置，适用于滤后液压油及润滑油箱的注油及加油。

Flow rate 33 l/min. 流量33 l/min。

Pressure max. 5 bar. 最大压力5bar。

Electrical motor: single and 3 phase. 电机: 单相及三相。

## UFM 050



UMF 050 mobile filtration units suitable for filling and refilling of filtered hydraulic fluids and lubrication tanks.

UMF 050移动过滤装置，适用于滤后液压油及润滑油箱的注油及加油。

Flow rate 50 l/min. 流量50 l/min。

Pressure max. 10 bar. 最大压力10bar。

Electrical motor: single and 3 phase. 电机: 单相及三相

Use 3 phase if continued used is required  
如需连续使用，请使用三相电机。

Suitable with IN LINE CONTAMINATION MONITOR.  
适用于在线污染物监测器。

## UFM 090 - 180 - 918



UMF 090 – 180 mobile filtration units suitable for filling and refilling of filtered hydraulic fluids and lubrication tanks.

UMF 090 – 180移动过滤装置，适用于滤后液压油及润滑油箱的注油及加油。

Flow rate 90/180 l/min. 流量90/180 l/min。

Pressure max. 10 bar. 最大压力10bar。

Electrical motor: 3 phase 电动机: 三相。

UFM 918 two-speed electric motor with programmable flow of 90 or 180 l / min.

UFM 918双速电机，程序控制流量90或180 l / min。

Pressure max. 10 or 6 bar. 最大压力10或6bar。

Electrical motor: 3 phase 电机: 三相

Suitable with IN LINE CONTAMINATION MONITOR.  
适用于在线污染物监测器。

## ACCESSORIES 配件

### TA-TAP-SA-SAP



Metal and nylon filler plugs and air filters, filtration from 3 to 40  $\mu$ , air flow up to 15000 l/min (4000 gpm).

金属及尼龙注油塞和空气呼吸器，过滤范围为3~40  $\mu$ ，气流达15000 l/min (4000 gpm)。

### TKF-TKT-TSD



Nylon oil filler plugs, threaded, for filling hydraulic mini-power pack reservoirs and gearbox units.

尼龙注油塞，用以向微型电源组液压油箱及液压齿轮箱组注油。

### LVA-LVU



Oil level gauges with or without incorporated thermometers, tank fitting distances from 76 mm (3 in) to 2000 mm (78.74 in).

带或无嵌入式温度计的液位计，油箱拟合距离为76 mm (3 in) ~2000 mm (78.74 in)。

### LCC-LCP



Circular oil level gauges with BSP and metric thread from 1/2" to 2".

圆形液位计，1/2" ~2" 英国标准管螺纹及公制螺纹。

## EM1 - SVM 3/6



Threaded and flanged pressure gauge selectors, 1 - 3 - 6 positions.

Glycerine filled pressure gauges, 63 mm (2.48 in) and 100 mm (3.94 in), scale ranges from 25 bar (357 psi) to 600 bar (8570 psi).

螺纹及法兰压力表选择器，1 - 3 - 6位置。甘油填充压力计，63 mm (2.48 in) 及100 mm (3.94 in)，量程 25 bar (357 psi) ~600 bar (8570 psi)。

## FTA - FTR

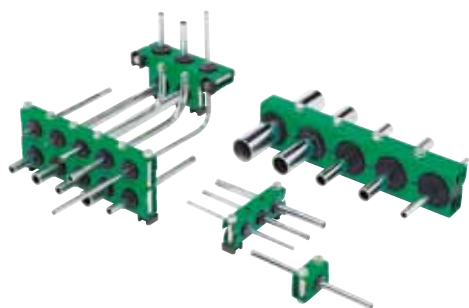


Vibration-dampened flexible brackets for fitting rigid suction and return pipes on tank cover.

Diameters from 6 mm (0.024 in) to 89 mm (3.5 in).

防振动挠性托架，用以配合油箱盖上的吸油管及回油管。直径6 mm (0.024 in) ~89 mm (3.5 in)。

## MULTIFIX



Metal clamps with NBR insert for fitting rigid and flexible pipes.

Possibility of single or modular fitting with superimposed pipes.

Diameters from 6 mm (0.024 in) to 50 mm (2 in).

带丁腈橡胶垫片的金属夹，用于刚性管及挠性管。可配有带叠加管的单接头或模块化接头。直径6mm (0.024 in) ~50 mm (2 in)。

## LEN - LEU



Electrical level gauges for tanks.

Single or double float versions with incorporated heat sensor option.

油箱液位计。单浮子型或双浮子型，带嵌入式热传感器选择。

# BELL - HOUSING & COUPLING

## 钟罩与联轴器

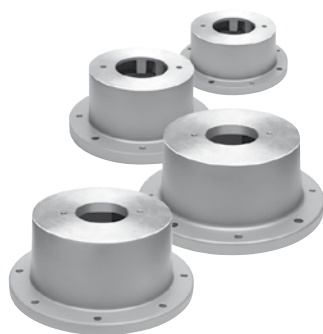
LMC



Monobloc bell-housings for gear pumps, UNEL-MEC electric motors from 0.12 to 22 Kw.

单模块钟罩，用于功率为0.12~22Kw的齿轮泵UNEL-MEC电机。

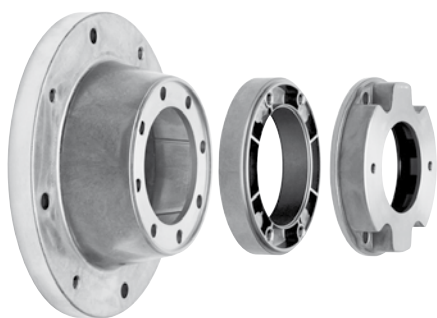
LMC



Monobloc bell-housings for piston, screw and vane pumps, UNEL-MEC electric motors from 0.5 to 45 Kw.

单模块钟罩，用于功率为0.5~45Kw的活塞泵、螺杆泵和叶片泵UNEL-MEC电机。

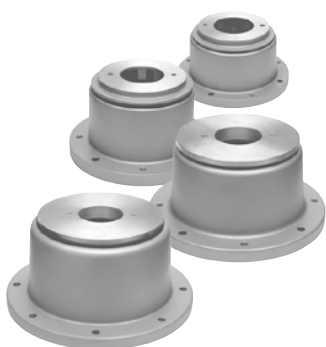
BMT



2 and 3 moduls bell-housings for piston and screw pumps, UNEL-MEC electric motors from 5.5 to 400 Kw.

2模块和3模块钟罩，用于功率为5.5~400Kw的活塞泵和螺杆泵UNEL-MEC电机。

LMS



Silenced bell-housings for piston and screw pumps, UNEL-MEC electric motors from 0.5 to 200 Kw.

低噪音钟罩，用于功率为0.5~200Kw的活塞泵和螺杆泵UNEL-MEC电机。

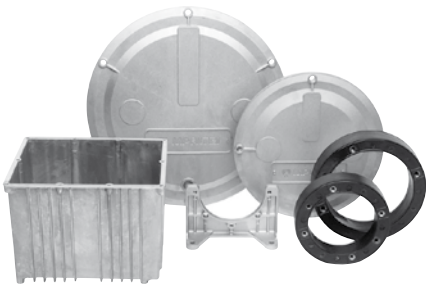
# SGEA - SGEG - SGES



Aluminium, cast iron and steel linkages for power transmission from 0.12 to 400 Kw.

铸铝、铸铁联轴器，用于功率为0.12到400 Kw的电力传输。

## PDMA - SE - OB



10-litre aluminium tank, inspection doors of diameter 350 and 475 mm conforming with DIN 24339 and feet for mounting bell-housings on B3 motors with power range from 0.25 to 22 Kw.

10升铝箱，检查孔符合DIN 24339，直径为359和475mm，脚用于将钟罩安装在功率范围为0.25~22KW的B3电动机上。

## ANMA



Vibration-dampened rings for mounting single pump unit on tank cover, with power range from 0.5 to 22 Kw UNEL-MEC electric motors.

用于将安装单泵机组安装在箱盖上的防振动弹簧，功率范围为0.5~22 KW。



[www.mpfiltri.com](http://www.mpfiltri.com)



[sales@mpfiltri.com](mailto:sales@mpfiltri.com)

[sales@mpfiltri.com](mailto:sales@mpfiltri.com)



[www.hydraulicparticlecounter.com](http://www.hydraulicparticlecounter.com)

# *MP FILTRI WORLDWIDE*

## 全世界MP FILTRI网络

*ITALY 意大利*



*GREAT BRITAIN 英国*



*GERMANY 德国*



*FRANCE 法国*



*USA 美国*



*CANADA 加拿大*



*SHANGHAI 上海*

Sales office  
**MP FILTRI RUSSIA**

销售办事处  
**MP FILTRI 俄罗斯**

Sales office  
**MP FILTRI INDIA**

销售办事处  
**MP FILTRI 印度**